

1



2



	20-22		12mm	22
12-16mm	20			22

3 10d



1

弯制角度	45°	90°	135°	180°
扳距	1.5~2d	2.5~3d	3~3.5d	3.5~4d

豆丁施工

1 d

2

4



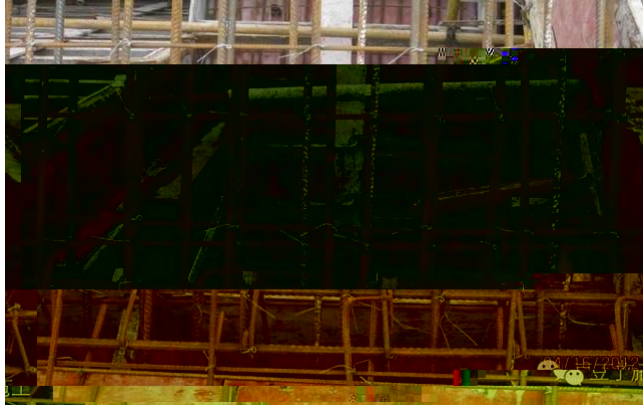
5



6



7



8



1

2

1

2

3

9



1

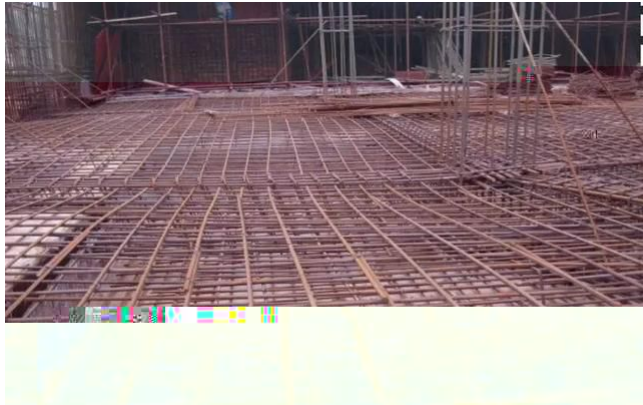
2

10

1

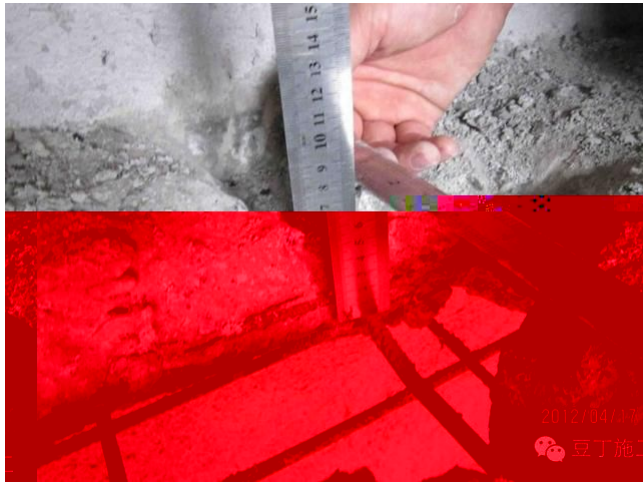
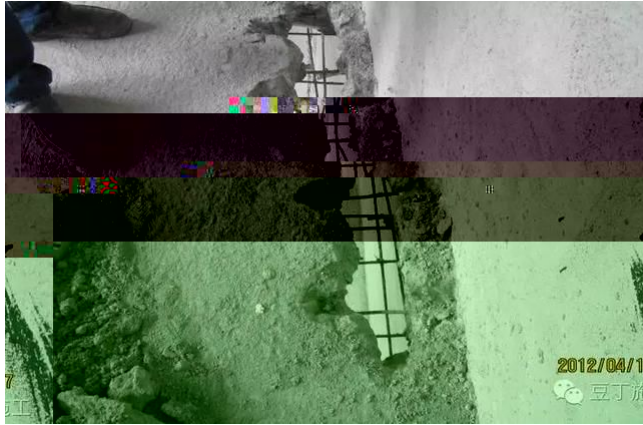


2



11

1



1

2

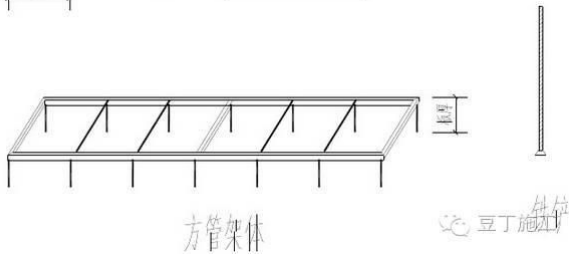
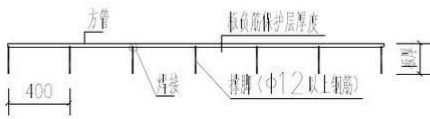
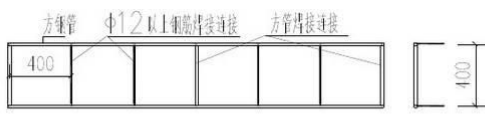
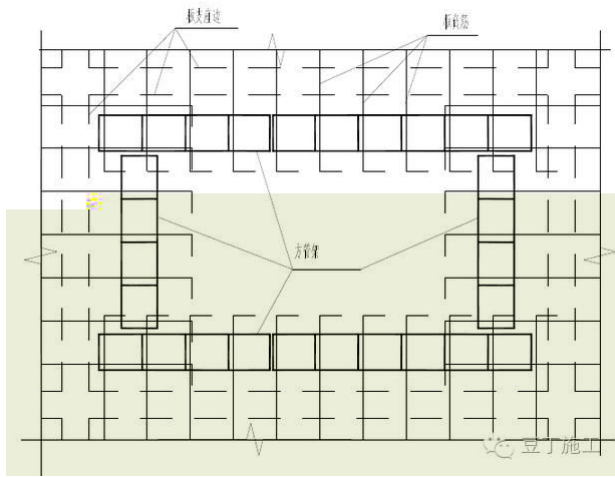
1

2

3

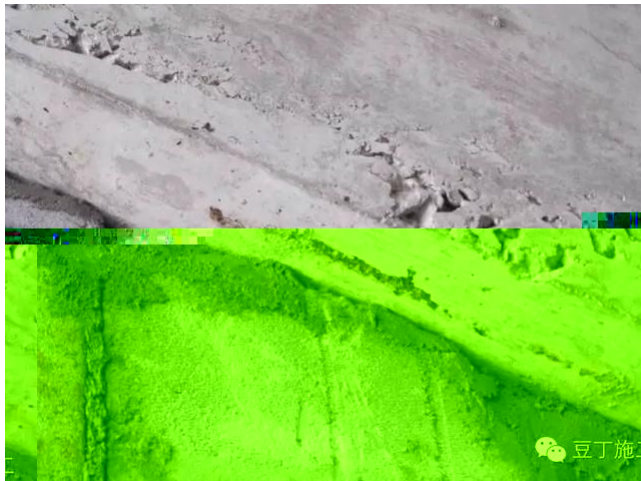
(3 4)

4



方管架体

2





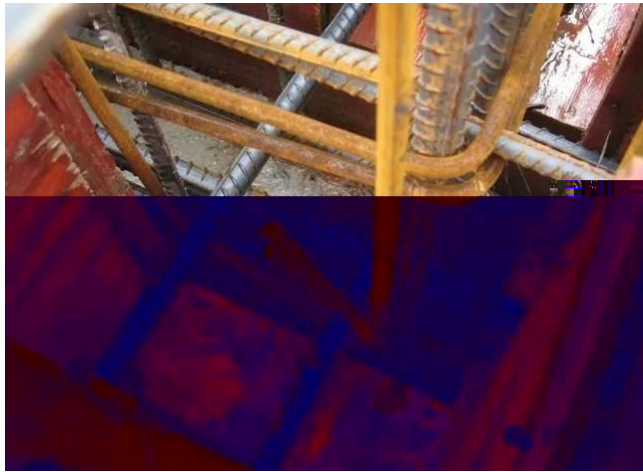


1		1.2mm		15mm× 15mm	20mm× 20mm
	6				
2		12	14		
3	25				
1		6		1.5	3.0
					2
			400mm		12
			400mm		
3					
			30mm		
4					
5				400mm	
1					
		350mm			
2			22		
3					
4					

5					
1					
2					
3					
4					
12					
1					



2



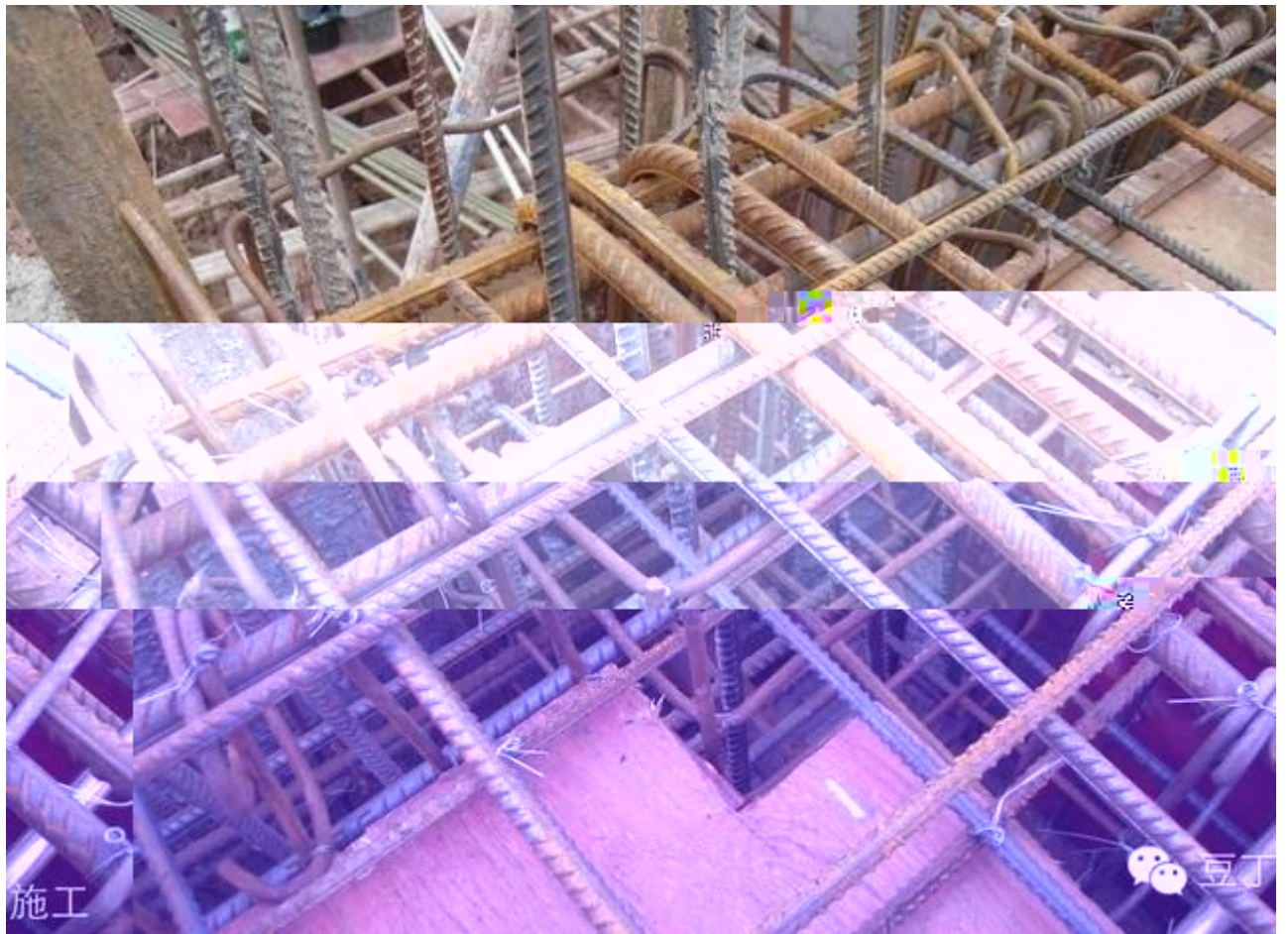
3



6mm 8mm

5 cm





— THE END —

“ ”

<http://jz.docin.com>